



Replacement Guarantee

# Smart Home Starter Kit



## 6 SMART HOME DEVICES IN 1 KIT



**Tapo H100**

Smart Hub  
with Chime



**Tapo C110**

Home Security  
Wi-Fi Camera



**Tapo C120**

Tapo Indoor/Outdoor Wi-Fi  
Home Security Camera



**Tapo P105**

Mini Smart  
Wi-Fi Plug



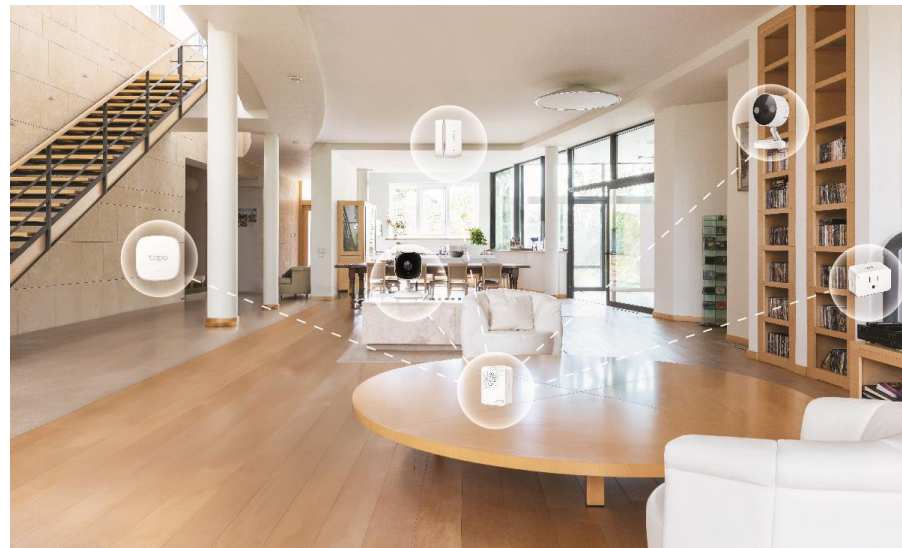
**Tapo T310**

Temperature and  
Humidity Sensor



**Tapo T110**

Smart  
Contact Sensor



# Indoor/Outdoor Home Security Wi-Fi Camera

2K  
QHD

Tapo C120



## Superior Starlight Color Night Vision

Free Smart AI  
Detection

IP66 Water and  
Dust Resistance

Color Night Vision  
with Spotlights

works with | **amazon alexa**

works with  
**Google Home**



## // Features



### 2K QHD<sup>Δ</sup>

Capture sharper, more revealing images with 1.7x more pixels than 1080p.



### Discreet Night Vision with 940nm IR LED

Enjoy unobtrusive night-time monitoring of your baby or pet with the barely-noticeable, low-intensity 940nm IR LED.



### Two-Way Audio

Communicate in real time through a built-in microphone and speaker.



### Smart AI Detection

Smart AI identifies people, pets, vehicles, while also recognizing abnormal sounds, notifying users as needed.



### Alarm System

Trigger lights and sounds as an alarm when motion is detected.



### Local<sup>†</sup> and Cloud<sup>‡</sup> Storage

Save recorded videos to a microSD card (up to 512 GB)<sup>†</sup> or by using Tapo Care<sup>‡</sup> cloud storage services.



### Activity Zones

Set up your own activity zones to only receive alerts that matter.



### Color Night Vision with Spotlights

Reveals high-fidelity details and color at night with the embedded spotlights.



### Customizable Block Zones

Set customizable block zones to keep private areas from being monitored.

<sup>†</sup>microSD card needs to be purchased separately.

<sup>‡</sup>Subscribe for cloud storage at <https://www.tapo.com/tapocare/>

<sup>Δ</sup>Compatible with Alexa and Google Assistant supported displays. User experience is dependent on the connected device's specifications.

<sup>§</sup>Tapo C120 does not have an Ethernet port and can only be connected via Wi-Fi.

For more information, please visit <https://www.tapo.com/>

All brands and product names are trademarks or registered trademarks of their respective holders. Specifications are subject to change without notice.

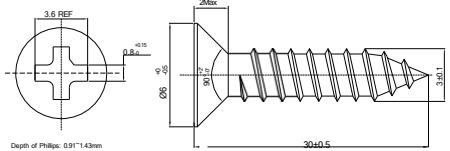
©2024 TP-Link

## // Specifications

<b>Camera</b>	Image Sensor	1/2.9" Progressive Scan CMOS Starlight Sensor
	Lens	Focal Length: 3.17mm Aperture: 1.65 Field of View: 120° (Diagonal), 103° (Horizontal), 55° (Vertical)
	Night Vision	850 nm IR LED (30 ft / 9 m) 940 nm IR LED (30 ft / 9 m) Full-Color Night Vision
	Day/Night Switch	IR-Cut Filter with Auto-Switching
	Lighting	2× Built-in Spotlights
	Interface & Button	1× RESET Button 1× microSD Card Slot (Up to 512 GB)
	Hub Compatibility	/
<b>Video &amp; Audio</b>	Maximum Resolution	2K QHD 4MP (2560 × 1440 px)
	Frame Rate	20 fps (Self-adaptive according brightness)
	Digital Zoom	12x
	Video Compression	H.264
	Live View	Yes

<b>Video &amp; Audio</b>	Image Enhancement	3DNR WDR
	Audio Input & Output	Built-in Microphone and Speaker
	Audio Communication	Two-Way Audio with Noise Cancellation
	Siren Volume	96 dB (Level measured at 4-inch/10-cm distance)
<b>Storage</b>	Local Storage	microSD Card Slot on Camera (Up to 512 GB)
	Cloud Storage	Tapo Care Cloud Storage Services (Subscription required)
<b>Detection &amp; Notification</b>	Sensor	/
	AI Detection	Motion Detection Person Detection Pet Detection Vehicle Detection Line-Crossing Detection Baby Crying Detection Cat Meows Detection Dog Barks Detection Glass Break Detection
	Activity Zones	Yes *Only works with Motion Detection.
	Output Notification	System Notification System Notification with Snapshot (Tapo Care Services)

<b>Network</b>	Network Connectivity	Connect via Wi-Fi
	Wireless Connectivity	IEEE 802.11b/g/n, 2.4 GHz Wi-Fi
	Transmission Rate	11b: 11 Mbps 11g: 54 Mbps 11n: 72.2 Mbps
	Protocol	TCP/IP, DHCP, ICMP, DNS, NTP, HTTPS, TCP, UDP
	Max. Distance Between Hub and Camera/Doorbell	/
	Ethernet Port	/
	RTSP	Yes
	ONVIF	Yes
<b>Security</b>	Security	On-Device Machine Learning 128-bit AES Encryption with SSL/TLS WPA/WPA2-PSK/WPA3
<b>Power</b>	Power Source	5V DC Power Adapter
	Input Voltage	100-240 V, 50/60 Hz
	Output Voltage	5.0 V, 1.0 A (DC Power)
	DC Power Connector Size	Adapter: USB A Camera: USB Type C
	Power Cord Length	3 m

<b>Power</b>	Typical Power Consumption	1.59 W
	Maximum Power Consumption	3.73 W 4.7 W (with adapter)
<b>General</b>	Certifications	FCC, IC, NCC, BSMI, KC, CE, NTRA, RCM, JRF, VCCI, ERP, IP66, ONVIF
	Smart Integration	Google Assistant, Amazon Alexa
	Weather Resistance	IP66
	Mounting Options	Tabletop Ceiling-Mounted
	Operating Temperature	-25 °C ~ 45 °C (-13 °F ~ 113 °F)
	Storage Temperature	-20 °C ~ 60 °C (-4 °F ~ 140 °F)
	Operating Humidity	10%~90% RH, Non-condensing
	Storage Humidity	5%~90% RH, Non-condensing
	Charging Temperature	\
	Mounting Screw Size	
	Dimensions	2.65 × 2.26 × 1.74 in (67.4 × 57.4 × 44.1mm)
	Weight	3.5 oz / 100 g



<p><b>General</b></p>	<p>Package Contents</p>	<p>                     Tapo C120 Camera                      USB Power Adapter                      Quick Start Guide                      Mounting Anchors                      Mounting Screws                      Mounting Template                      Metal Plate                      3M Adhesive                      3-Meter Type-C Wire                      Cable Organizers                      Detaching Pin                 </p>
-----------------------	-------------------------	---

**2K**  
Resolution

# Home Security Wi-Fi Camera

Tapo C110



## Person and Motion Detection

Baby Crying  
Detection

Night Vision  
up to 30 ft

Local microSD Storage  
(Up to 512 GB)<sup>†</sup>



works with | **amazon alexa**

works with  
**Google Home**

## // Features



### 2K Resolution<sup>Δ</sup>

Provides greater sharpness and clarity.



### Customizable Block Zones

Set customizable block zones to keep private areas from being monitored.



### Alarm System

Triggers sound alarms to frighten away unwanted visitors.



### Night Vision (Up to 30 ft)

Provides a visual distance of up to 30 ft in total darkness.



### Two-Way Audio

Communicate in real time through a built-in microphone and speaker.



### Sharing

Share adorable and amusing moments with loved ones.



### Local<sup>†</sup> & Cloud<sup>‡</sup> Storage

Save recorded videos to a microSD card (up to 512GB)<sup>†</sup> or by using Tapo Care<sup>‡</sup> cloud storage services.



### Activity Zones

Set up your own activity zones to only receive alerts that matter.



### Easy Setup

Follow in-app instructions to easily set up within minutes.

<sup>Δ</sup>Compatible with Alexa and Google Assistant supported displays. User experience is dependent on the connected device's specifications.

<sup>†</sup>microSD card needs to be purchased separately.

<sup>‡</sup>Subscribe for cloud storage at <https://www.tapo.com/tapocare/>

For more information, please visit <https://www.tapo.com/>

All brands and product names are trademarks or registered trademarks of their respective holders. Specifications are subject to change without notice.

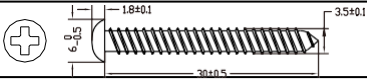
©2024 TP-Link

## // Specifications

<b>Camera</b>	Image Sensor	1/2.8" Progressive Scan CMOS Not Starlight Sensor
	Lens	Focal Length: 3.15mm Aperture: F2.0 Field of View: 129.4° (Diagonal), 107.6° (Horizontal), 57.6° (Vertical)
	Night Vision	850 nm IR LED (30 ft / 10 m)
	Day/Night Switch	IR-Cut Filter with Auto-Switching
	Lighting	/
	Interface & Button	1× RESET Button 1× microSD Card Slot (Up to 512 GB)
	Hub Compatibility	/
<b>Video &amp; Audio</b>	Maximum Resolution	2304 × 1296 px
	Frame Rate	15 fps
	Digital Zoom	None
	Video Compression	H.264
	Live View	Yes
	Image Enhancement	3DNR WDR

<b>Video &amp; Audio</b>	Audio Input & Output	Built-in Microphone and Speaker
	Audio Communication	Two-Way Audio with Noise Cancellation
	Siren Volume	89dB (Level measured at 4-inch/10-cm distance)
<b>Storage</b>	Local Storage	microSD Card Slot on Camera (Up to 512 GB)
	Cloud Storage	Tapo Care Cloud Storage Services (Subscription required)
<b>Detection &amp; Notification</b>	Sensor	/
	AI Detection	Motion Detection Person Detection Baby Crying Detection
	Activity Zones	Yes *Only works with Motion Detection.
	Output Notification	System Notification System Notification with Snapshot (Tapo Care Services)
<b>Network</b>	Network Connectivity	Connect via Wi-Fi
	Wireless Connectivity	IEEE 802.11b/g/n, 2.4 GHz Wi-Fi
	Transmission Rate	11b: 11 Mbps 11g: 54 Mbps 11n: 72.2 Mbps
	Protocol	TCP/IP, DHCP, ICMP, DNS, NTP, HTTPS, TCP, UDP
	Max. Distance Between Hub and Camera/Doorbell	/

<b>Network</b>	Ethernet Port	/
	RTSP	Yes
	ONVIF	Yes
<b>Security</b>	Security	On-Device Machine Learning 128-bit AES Encryption with SSL/TLS WPA/WPA2-PSK
<b>Power</b>	Power Source	9V DC Power Adapter
	Input Voltage	100-240 V, 50/60 Hz
	Output Voltage	9 V, 0.6 A (DC Power)
	DC Power Connector Size	Inside Ø: 2.1 mm Outside Ø: 5.5 mm
	Power Cord Length	3 m
	Typical Power Consumption	2.0 W
	Maximum Power Consumption	4.5 W
<b>General</b>	Certifications	FCC, IC, WWA, CE, NCC, BSMI, NTRA, JPA, VCCI
	Smart Integration	Google Assistant, Amazon Alexa
	Weather Resistance	/
	System Requirements	Tapo App: iOS 9.0 or higher, Andriod 4.4 or higher

<b>General</b>	Mounting Options	Tabletop Ceiling-Mounted
	Operating Temperature	0 °C ~ 40 °C (32 °F ~ 104 °F )
	Storage Temperature	-20 °C ~ 60 °C (-4 °F ~ 140 °F)
	Operating Humidity	10%~90% RH, Non-condensing
	Storage Humidity	5%~90% RH, Non-condensing
	Charging Temperature	
	Mounting Screw Size	
	Dimensions	2.66 × 2.15 × 3.89 in (67.6 × 54.6 × 98.9 mm)
	Weight	2.5 oz / 70 g
	Package Contents	Tapo C110 Camera DC Power Adapter Quick Start Guide Mounting Anchors Mounting Screws Mounting Template

# Tapo Smart IoT Hub with Chime



Tapo H100



Smart Alarm



Smart Doorbell



19 Ringtone  
Options



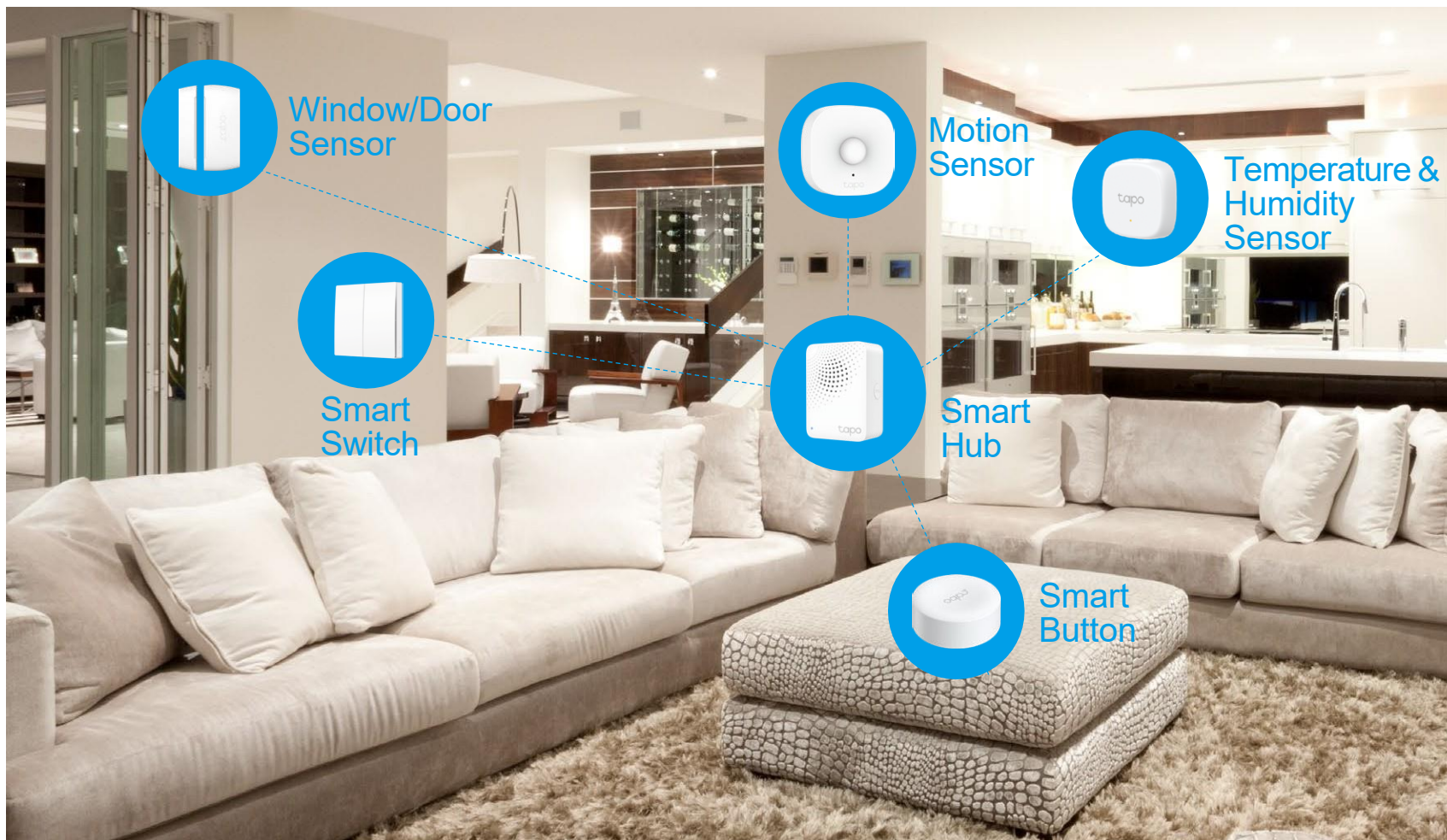
Up to 64  
Devices





## // Tapo Smart Ecosystem

Tapo is the easy way to turn your home into a smart home. At the center of it all is the Tapo Hub. With superior ultra-low-power performance, Tapo Hub connects wirelessly with a wide range of Tapo accessories. So you can easily control and monitor your home from anywhere.



## // Features

- Ultra-Long Distance Connection - With the low frequency wireless protocol, Tapo hub sends and receives data steadily throughout your home.
- Ultra-Low-Power Performance - Connect wirelessly with a wide range of Tapo accessories and never let your guard down.
- Real-Time Notifications - Monitor your entire home and all connected devices to get instant alerts when the activity is detected. The built-in alarm gives you more than enough protection.
- 19 Ringtone Options - 90 DB<sup>‡</sup> built-in multiple ringtones for your customized scenarios.
- Up to 64 Devices<sup>#</sup> - Connect multiple devices to create a smart ecosystem for your home.
- Device Sharing - Easily share management permissions with each member of your family.
- Easy Setup and Use - No wiring required. Set up quickly and manage easily through the free Tapo app.
- Flame-Retardant<sup>△</sup> - PC flame-retardant materials help minimize burning hazards.

<sup>‡</sup>Decibel values may vary by ringtones and environmental factors.

<sup>#</sup>The max connections may vary by the types of smart devices connected.

<sup>△</sup>Made with V-0 (UL94) flame-retardant materials.

## // Specifications

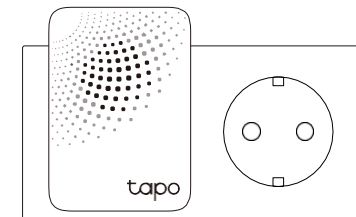
### General

- Wireless: 2.4 GHz Wi-Fi, 868 MHz for connected devices<sup>§</sup>
- Rating: AC, 100-240 V, 50/60 Hz
- Power Consumption: 0.5 W
- Standby Power Consumption: 0.1 W
- Material: V-0 (UL-94) Flame retardant PC<sup>△</sup>
- LED&Button: Status LED, SYNC/Silence Button
- Built-in: 90 DB<sup>‡</sup> alarm, 19 ringtones



### Others

- Package Contents:  
Smart Hub Tapo H100  
Quick Start Guide
- Certifications: CE, RoHS
- Operating Temperature: 0 °C– 40 °C (32°F–104°F)
- Operating Humidity: 10%–90%RH, Non-condensing
- Dimensions: 72×70.3×51 mm (2.8×2.7×2 inch)



<sup>§</sup>The specific working frequencies are 863 MHz to 865 MHz, and 868 MHz to 868.6 MHz.

<sup>△</sup>Made with V-0 (UL94) flame-retardant materials.

<sup>‡</sup>Decibel values may vary by ringtones and environmental factors.

Please do not use in damp environments or outdoors. For more information, please visit <https://www.tapo.com/>

Specifications are subject to change without notice. All brands and product names are trademarks or registered trademarks of their respective holders.

©2022 TP-Link

# Tapo Smart Contact Sensor

Tapo T110

Tapo Hub Required



Monitor windows and doors in real-time



Automatically turn on the light  
when you open the door/wardrobe



Notify you when the fridge is open



Work with Tapo devices



## // Features

- Window/ Door Safeguard - Monitor the opening & closing of windows, doors, cabinets, the fridge, or the mailbox in real time.
- Real-Time Notifications - Trigger Hub alarm and send you notifications via Tapo app whenever doors/windows are open.
- Smart Actions Support - Connect the actions with other smart devices whenever doors/windows are open for security or home automation.
- Battery Powered - Battery-powered design with 2-year<sup>#</sup> battery life.
- Easy Installation - Mount to nearly any surface with included 3M adhesive.
- Device Sharing – Easily share management permissions with each member of your family.
- Easy Setup and Use – Set up quickly and easily through the free Tapo app.

## // Specifications

### General

- **Wireless:** 868 MHz (EU version)\*; 922 MHz (US version)▲
- **Notifications:** Tapo Hub alarm, Tapo app notifications
- **Battery Life:** 2 Years<sup>#</sup>

\*Tapo Hub Required



### Others

- **Package Contents:**  
Smart Sensor Tapo T110  
Quick Start Guide  
Battery CR2032\*1  
3M Adhesive x 3
- **Certifications:** FCC, CE, R-NZ, UKCA, RoHS, JRF, VCCI, NCC, RCM
- **Operating Temperature:** 0 °C– 40 °C (32°F–104°F )
- **Operating Humidity:** 10%–90%RH, Non-condensing
- **Dimensions:** 61.4 × 37.5 × 12.3 mm

<sup>#</sup>Based on the testing of 30 triggers a day.

\*The specific working frequencies for EU version are 863 MHz to 865 MHz and 868 MHz to 868.6 MHz.

▲The specific working frequencies for US version are 920.9 MHz to 923.3 MHz.

Specifications are subject to change without notice. All brands and product names are trademarks or registered trademarks of their respective holders.

©2024 TP-Link

# Tapo Smart Temperature & Humidity Sensor

Tapo T310

Tapo Hub Required



Fast & Accurate Monitoring



Real-time App Notifications



Free 2-Year Data Storage & Export



Work with Tapo devices



## // Features

- High-Accuracy Sensor- Feature the Swiss-made sensor chip with real-time data updates every 2s.
- Real-Time Notifications - Send you notifications via Tapo app whenever temperature or humidity levels fall out customized ranges.
- Smart Actions Support - Connect the actions with other smart devices for home automation.
- Data Storage & Export - Up to 2 years' free cloud data storage, and export at any time.
- Battery Powered - Battery-powered design with 1+ year battery life.
- Easy Installation - Place it anywhere with multiple installation options.
- Device Sharing – Easily share management permissions with each member of your family.
- Easy Setup and Use – Set up quickly and easily through the free Tapo app.



## Specifications

### General

- **Wireless:** 868 MHz (EU version)\*; 922 MHz (US version)▲
- **Temperature Range:** -20~60°C (-4~140°F)
- **Humidity Range:** 0%~99%RH
- **Temperature Accuracy:** ±0.3°C /±0.54°F; Up to ±0.2°C / ±0.32°F from 5°C - 60°C / 41°F - 140°F
- **Humidity Accuracy:** ±3%RH; Up to ±2%RH from 20%RH - 80%RH @ 25°C / 77°F
- **Refresh Rate:** 2 Seconds
- **Battery Life:** 1 Year+

Note: Tapo Hub Required



### Others

#### Package Contents:

Smart Sensor Tapo T310	Lanyard*1
Quick Start Guide	3M Adhesive
Battery CR2450*1	Adhesive Magnet
Eject Pin	

- **Certifications:** FCC, CE, R-NZ, UKCA, RoHS, JRF, VCCI, NCC, RCM
- **Operating Temperature:** -20~60°C (-4~140°F)
- **Operating Humidity:** 0%–99% RH
- **Dimensions:** 46 × 46 × 12.3 mm

\*The specific working frequencies for EU version are 863 MHz to 865 MHz and 868 MHz to 868.6 MHz.

▲The specific working frequencies for US version are 920.9 MHz to 923.3 MHz.

Note: Currently, Alexa can only be used to check temperature, not humidity.

Specifications are subject to change without notice. All brands and product names are trademarks or registered trademarks of their respective holders.

©2023 TP-Link

# Mini Smart Wi-Fi Plug

Model: Tapo P105

Live Smarter



Remote Control



Schedule & Timer



Voice Control



Easy setup



Away Mode



Flame-retardant\*



## // Features

- Remote Control – Instantly turn connected devices on/off wherever you are through the Tapo app.
- Schedule – Preset a schedule to automatically manage devices.
- Timer - Create countdown timer lists for connected electronics.
- Voice Control – Manage your smart socket with voice commands via Amazon Alexa or the Google Assistant.
- Away Mode – Automatically turns devices on and off at different times to give the appearance that someone is home.
- Compact Design - Mini-sized to avoid blocking adjacent sockets.
- Easy Setup and Use - No hub required, set up quickly and manage easily through the free app. Bluetooth onboarding technology makes setup simpler for faster connection.
- Device Sharing - Easily share management permissions with each member of your family.
- Flame-Retardant\* - PC flame-retardant materials help minimize burning hazards.

\*Made with V-0 (UL94) flame-retardant materials.

## // Specifications

### General

- LED&Button: Status LED, Power Button
- Material: PC
- Power Supply: AC, 100-125 V, 50/60 Hz 15 A
- Max Load: 1800 W, 15 A
- Protocol: IEEE 802.11b/g/n, Bluetooth 4.2 (for onboarding only)
- Wireless Type: 2.4 GHz
- System Requirements: Android 4.4 or higher, iOS 9.0 or higher

### Others

- Package Contents:  
Mini Smart Wi-Fi Plug Tapo P105  
Quick Start Guide
- Certifications: FCC, RoHS
- Operating Temperature: 0 °C– 40 °C (32°F–104°F )
- Operating Humidity: 10%–90%RH, Non-condensing
- Dimensions : 2.4\* 1.5\* 1.3 in (60\*38\*33 mm)



\*Made with V-0 (UL94) flame-retardant material.

\*Bluetooth is only used for onboarding.

\*The total power of the connected electrical equipment should not exceed the max load current (15 A).

\*Please do not use in damp environments or outdoors.

For more information, please visit <https://www.tapo.com/>

Specifications are subject to change without notice. TP-Link is a registered trademark of TP-Link Technologies Co., Ltd. App store is a service mark of Apple Inc. Google is a trademark of Google LLC. Amazon, Alexa, and all related logos are trademarks of Amazon.com, Inc. or its affiliates. Other brands and product names are trademarks or registered trademarks of their respective holders. Copyright ©2020 TP-Link Technologies Co., Ltd. All rights reserved.